



Interactive Button / Touch Media Player Solution

The Series MPC300BT is available as Box with a terminal block to easily screw the push button cables on it and RS232 Interface to connect to any RS232 Touch Screen. It comes with the configuration Software MPO Touch (Media Player Organizer) which is very easy to use and allow you in 3 steps to configure the MPC300BT. It's a very easy to use Standalone Kiosk Solution, and simply by changing the Storage Device (CF card, SD, or USB) you can change the content and interactivity.



Front view



Rear view

Features

- Auto and Loop playback seamlessly
- Auto Slide show with multiple transition effects
- Playback Video (MPEG1,2,4), Digital pictures (JPEG), or Digital Music (Mp3)
- All content can store in any of 6 types of Memory Card (CF/MD/SD/SM/MS/MMC) or USB flash drive
- Stable and reliable appliance - shorter boot up time, virus proof

Specifications

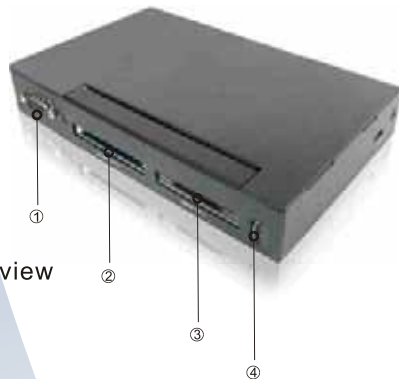
MODEL NAME : MPC300BT

General	Storage Media Power Supply Power Consumption Operation temperature	CF/Micro Drive/SD/SM/MS /MMC/USB flash drive 12V 2A DC input 4.8W ,typical, normal operation 0 to 40 Centigrade, Humidity 5-85% @40C
Content	Video Format support Graphics Format support Audio Format	MPEG1,MPEG2,MPEG4* JPEG MP3
Interface	Video Output Audio Output COM Port Terminal Block USB Port	Composite, S-Video, VGA Earphone Ouput RS232 (for touch monitor) 16 pin terminal Block (for push button) USB x 1
Accessories	Remote Controller AC-DC power adapter AC power cable User Manual CD	

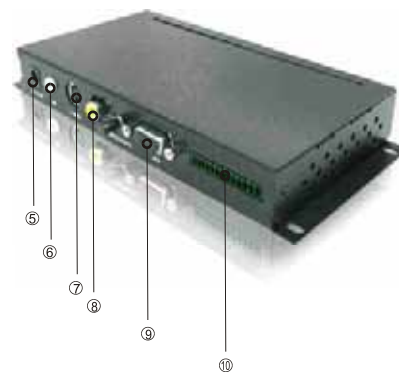
* CF card is recommended when playing MPEG2 Video.



Interactive Button Media Player



Front view



Rear view

1. RS232 Connects to Touch Monitor
2. CF Cards
3. Smart Cards
4. USB
5. Power
6. Audio

7. S-Video
8. Composite
9. VGA
10. Terminalblock to connect push-buttons

Interactive Button / Touch Media Player Solution



4 Easy Steps of Hardware Installation

Step1.

Connect RS232 cable to MPC300BT and connect another end to touch monitor



Step2.

Connect output cable (for instance : VGA) to MPC300BT and connect another end to touch monitor



Step3.

Plug in terminal block



Step4.

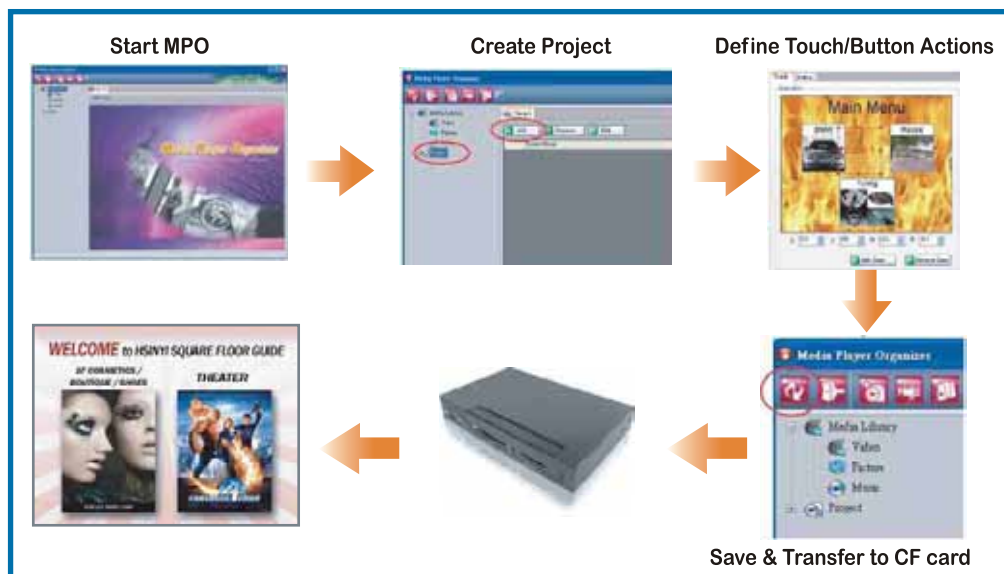
Connect power cable of MPC300BT and touch monitor



Tips: pushbutton and touch control can coexist for a system or you can choose either one of them. Skip step1 if you don't need touch control; skip step3 if you don't need pushbutton.

1 Easy Software Defining Touch/Button Actions

We provide the simplest and most powerful software (MPO) for you to define the touch and push button actions, such as showing a project picture or playing a music video.



Applications

Product introduction



Vehicle Promotion



Album Selling

